

Light-duty wheels and castors

1



Selection tool

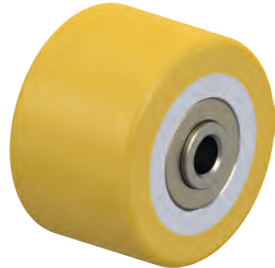
Light-duty wheels and castors

1



Series	TPA	VPA	POES
Tread / tyre	Thermoplastic rubber-elastomer (TPE)	Solid rubber	Elastic solid rubber "Blickle SoftMotion"
Tread and tyre hardness	85 Shore A	80 Shore A	55 Shore A
Non-marking	✓	✓	✓
Electrical conductivity	optional	optional	–
Wheel centre / rim	polypropylene	nylon	nylon
Wheel Ø	50–125 mm	50–150 mm	100–125 mm
Load capacity up to	125 kg	130 kg	150 kg
Rolling resistance	■ ■ ■ ■ ■ □	■ ■ ■ □ □ □	■ ■ ■ ■ ■ □
Smooth operation and floor preservation	■ ■ ■ □ □ □	■ ■ ■ ■ ■ □	■ ■ ■ ■ ■ ■
Non-staining	tread contains oil; alternative: VPA, POES, PATH	✓	✓
For a description of the wheel, refer to	page 122	page 127	page 133
For information about swivel and fixed castors, refer to	page 123–126	page 128–132	page 134–135

■ ■ ■ ■ ■ excellent
 ■ ■ ■ ■ ■ very good
 ■ ■ ■ ■ good
 ■ ■ satisfactory
 ■ sufficient
 ✓ yes – no



PATH	VSTH	POA
Thermoplastic polyurethane (TPU)	Polyurethane-elastomer Blickle Extrathane®	Nylon
94 Shore A	92 Shore A	70 Shore D
✓	✓	✓
optional	–	–
nylon	steel	nylon
50–125 mm	35–50 mm	35–150 mm
250 kg	150 kg	280 kg
■ ■ ■ ■ ■ □	■ ■ ■ ■ ■ □	■ ■ ■ ■ ■ ■
■ ■ ■ ■ □ □	■ ■ ■ ■ □ □	■ ■ □ □ □ □
✓	✓	✓
page 136	page 286	page 143
page 137–140	page 141–142	page 144–147

TPA series

Wheels with thermoplastic rubber tread,
with polypropylene wheel centre



50–125 kg

Tread and tyre hardness
 85 Shore A

Smooth operation / floor preservation
 good

Rolling resistance
 very good

Wear resistance
 satisfactory

1

Tread:

- high-quality thermoplastic rubber-elastomer (TPE), hardness 85 Shore A
- low rolling and swivel resistance
- colour grey, non-marking
- chemically-bonded inseparable connection with the wheel centre

Wheel centre:

- high-quality polypropylene, impact resistant
- colour silver grey ("ELS" version colour black)

Other features:

- KF version: with synthetic thread guard, large
- very high chemical resistance to many aggressive substances
- operating temperature: -20 °C to +60 °C, reduced load capacity over +30 °C
- tread contains oil, may stain sensitive surfaces. alternatives: Series VPA, POES, PATH

Additional details:

- wheel series: page 60
- tread: page 52
- bearing types: page 84–85
- chemical resistance: page 51

Wheels	Wheel Ø	Wheel width	Load capacity	Bearing type	Axle bore Ø	Hub length
	(D) [mm]	(T2) [mm]	[kg]		(d) [mm]	(T1) [mm]
TPA 50/8G	50	19	50	plain bore	8	22
TPA 50/6KF	50	19	50	ball bearing (C)	6	23
TPA 75/8G	75	25	75	plain bore	8	29.5
TPA 75/6KF	75	25	75	ball bearing (C)	6	31
TPA 80/12G	80	32	100	plain bore	12	35
TPA 80/8KF	80	32	100	ball bearing (C)	8	36
TPA 100/8G	100	25	90	plain bore	8	29.5
TPA 101/12G	100	32	110	plain bore	12	35
TPA 101/8KF	100	32	110	ball bearing (C)	8	36
TPA 126/12G	125	32	125	plain bore	12	35
TPA 126/8KF	125	32	125	ball bearing (C)	8	36

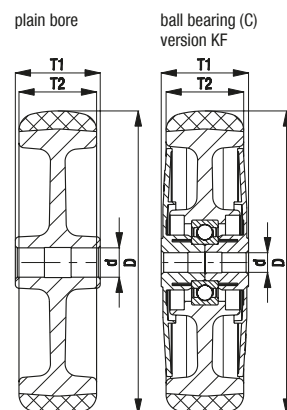
For other dimensions, see page 186

Versions / options



	plain bore version	electrically conductive version, non-marking grey	large thread guard with additional ball bearing seals
Technical description page		50	85
Product code suffix		-ELS	-KFD
Available for		all*	all ball bearing versions

* Wheel load capacity of electrically conductive version reduced by 35%



LRA-TPA, BRA-TPA, LKRA-TPA, BKRA-TPA series

Light-duty castors with bolt hole, wheel with thermoplastic rubber tread



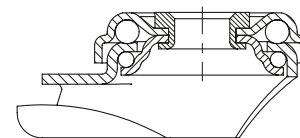
50–120 kg

- Bracket:** LRA/BRA, LKRA/BKRA series
- pressed steel, zinc-plated, blue-passivated, Cr6-free
- Swivel bracket:**
- double ball bearing in the swivel head
 - strong central kingpin
 - minimum swivel head play and smooth rolling characteristic and increased service life due to the special dynamic Blickle riveting process
 - synthetic "stop-fix" brake lever for series LRA, steel brake lever for series LKRA

- Wheel:** TPA series
- tread: high-quality thermoplastic rubber-elastomer (TPE), hardness 85 Shore A, colour grey, non-marking, oil containing
 - wheel centre: high-quality polypropylene, impact resistant, colour silver grey ("ELS" version colour black)

- Additional details:**
- bracket series: page 86
 - brakes: page 112–113
 - wheel series: page 122
 - bearing types: page 84–85

1



Swivel castors	Fixed castors	Swivel castors with "stop-fix" brake	Wheel Ø [mm]	Wheel width [mm]	Load capacity [kg]	Bearing type	Total height [mm]	Plate Ø [mm]	Bolt hole Ø [mm]	Offset swivel castor [mm]
LRA-TPA 50G	BRA-TPA 50G	LRA-TPA 50G-FI *	50	19	50	plain bore	69	43	11	23
LRA-TPA 50KF	BRA-TPA 50KF	LRA-TPA 50KF-FI *	50	19	50	ball bearing (C)	69	43	11	23
LRA-TPA 75G	BRA-TPA 75G	LRA-TPA 75G-FI *	75	25	75	plain bore	98	43	11	29
LRA-TPA 75KF	BRA-TPA 75KF	LRA-TPA 75KF-FI *	75	25	75	ball bearing (C)	98	43	11	29
LKRA-TPA 80G	BKRA-TPA 80G	LKRA-TPA 80G-FI	80	32	100	plain bore	108	57	13	40
LKRA-TPA 80G-11		LKRA-TPA 80G-11-FI	80	32	100	plain bore	108	57	11	40
LKRA-TPA 80KF	BKRA-TPA 80KF	LKRA-TPA 80KF-FI	80	32	100	ball bearing (C)	108	57	13	40
LKRA-TPA 80KF-11		LKRA-TPA 80KF-11-FI	80	32	100	ball bearing (C)	108	57	11	40
LRA-TPA 100G		LRA-TPA 100G-FI *	100	25	70	plain bore	121	43	11	33
LKRA-TPA 101G	BKRA-TPA 101G	LKRA-TPA 101G-FI	100	32	110	plain bore	133	57	13	40
LKRA-TPA 101G-11		LKRA-TPA 101G-11-FI	100	32	110	plain bore	133	57	11	40
LKRA-TPA 101KF	BKRA-TPA 101KF	LKRA-TPA 101KF-FI	100	32	110	ball bearing (C)	133	57	13	40
LKRA-TPA 101KF-11		LKRA-TPA 101KF-11-FI	100	32	110	ball bearing (C)	133	57	11	40
LKRA-TPA 126G	BKRA-TPA 126G	LKRA-TPA 126G-FI	125	32	120	plain bore	158	57	13	40
LKRA-TPA 126G-11		LKRA-TPA 126G-11-FI	125	32	120	plain bore	158	57	11	40
LKRA-TPA 126KF	BKRA-TPA 126KF	LKRA-TPA 126KF-FI	125	32	120	ball bearing (C)	158	57	13	40
LKRA-TPA 126KF-11		LKRA-TPA 126KF-11-FI	125	32	120	ball bearing (C)	158	57	11	40

* Synthetic brake lever, see image below
For stainless steel versions, see page 390

Versions / options**

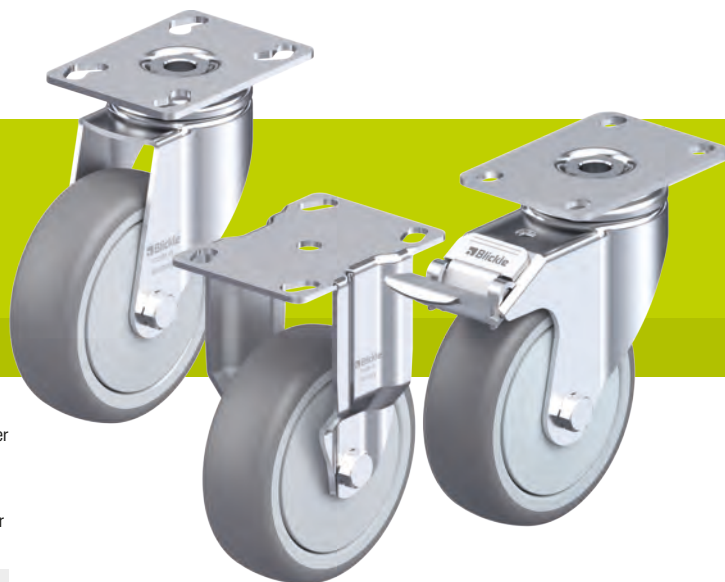


	plain bore version	with synthetic brake lever	electrically conductive version, non-marking grey	with threaded pin M10 x 30 M12 x 30	with plug-in pin Ø 11 x 30.5	with synthetic expander fitting	with metal expander fitting
Technical description page			50	104	105	105	105
Product code suffix			-ELS	-GS10 / -GS12	-ES	see page 148	see page 148
Available for		series LRA...-FI as standard	all***	-GS10: series LRA -GS12: series LKRA	series LRA swivel castors****	swivel castors with bolt hole Ø 11 mm (except ELS)	swivel castors with bolt hole Ø 11 mm

** Other versions / options: buffers AG / ARG series see page 148 (page 116 for technical information)
*** Wheel load capacity of electrically conductive version reduced by 35%
**** Synthetic castor socket for round tubes see page 148

LPA-TPA, BPA-TPA, LKPA-TPA, BKPA-TPA series

Light-duty castors with top plate,
wheel with thermoplastic
rubber tread



50–120 kg

Bracket: LPA/BPA, LKPA/BKPA series

- pressed steel, zinc-plated, blue-passivated, Cr6-free

Swivel bracket:

- double ball bearing in the swivel head
- strong central kingpin
- minimum swivel head play and smooth rolling characteristic and increased service life due to the special dynamic Blickle riveting process
- synthetic “stop-fix” brake lever for series LPA, steel brake lever for series LKPA

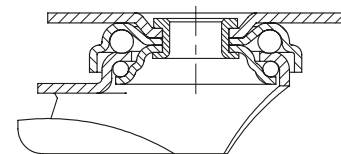
Wheel: TPA series

- tread: high-quality thermoplastic rubber-elastomer (TPE), hardness 85 Shore A, colour grey, non-marking, oil containing
- wheel centre: high-quality polypropylene, impact resistant, colour silver grey (“-ELS” version colour black)

Additional details:

- bracket series: page 86
- brakes: page 112–113
- wheel series: page 122
- bearing types: page 84–85

1



Swivel castors	Fixed castors	Swivel castors with “stop-fix” brake	Wheel Ø [mm]	Wheel width [mm]	Load capacity [kg]	Bearing type	Total height [mm]	Plate size [mm]	Bolt hole spacing [mm]	Bolt hole Ø [mm]	Offset swivel castor [mm]
LPA-TPA 50G	BPA-TPA 50G	LPA-TPA 50G-FI *	50	19	50	plain bore	71	60 x 60	38 x 38 / 48 x 48	6.2	23
LPA-TPA 50KF	BPA-TPA 50KF	LPA-TPA 50KF-FI *	50	19	50	ball bearing (C)	71	60 x 60	38 x 38 / 48 x 48	6.2	23
LPA-TPA 75G	BPA-TPA 75G	LPA-TPA 75G-FI *	75	25	75	plain bore	100	60 x 60	38 x 38 / 48 x 48	6.2	29
LPA-TPA 75KF	BPA-TPA 75KF	LPA-TPA 75KF-FI *	75	25	75	ball bearing (C)	100	60 x 60	38 x 38 / 48 x 48	6.2	29
LKPA-TPA 80G	BKPA-TPA 80G	LKPA-TPA 80G-FI	80	32	100	plain bore	111	90 x 66	75 x 45 / 61 x 51	8.5	40
LKPA-TPA 80KF	BKPA-TPA 80KF	LKPA-TPA 80KF-FI	80	32	100	ball bearing (C)	111	90 x 66	75 x 45 / 61 x 51	8.5	40
LPA-TPA 100G		LPA-TPA 100G-FI *	100	25	70	plain bore	123	60 x 60	38 x 38 / 48 x 48	6.2	33
LKPA-TPA 101G	BKPA-TPA 101G	LKPA-TPA 101G-FI	100	32	110	plain bore	136	90 x 66	75 x 45 / 61 x 51	8.5	40
LKPA-TPA 101KF	BKPA-TPA 101KF	LKPA-TPA 101KF-FI	100	32	110	ball bearing (C)	136	90 x 66	75 x 45 / 61 x 51	8.5	40
LKPA-TPA 126G	BKPA-TPA 126G	LKPA-TPA 126G-FI	125	32	120	plain bore	161	90 x 66	75 x 45 / 61 x 51	8.5	40
LKPA-TPA 126KF	BKPA-TPA 126KF	LKPA-TPA 126KF-FI	125	32	120	ball bearing (C)	161	90 x 66	75 x 45 / 61 x 51	8.5	40

* Synthetic brake lever, see image below

For stainless steel versions, see page 391

Versions / options

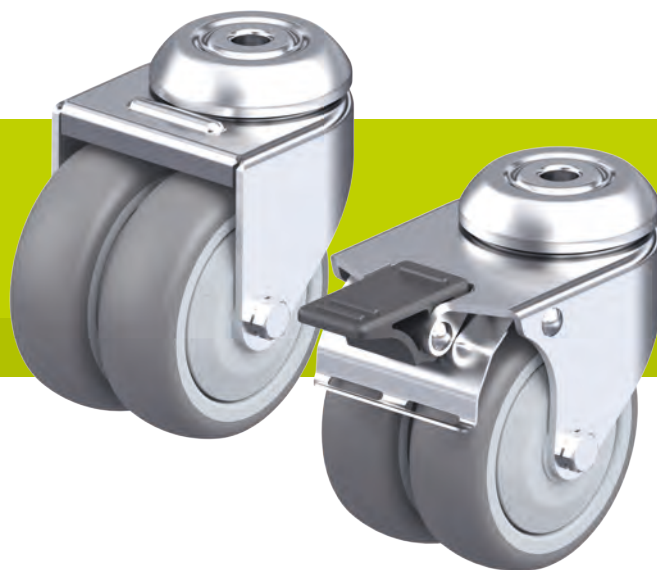


	plain bore version	with synthetic brake lever	electrically conductive version, non-marking grey
Technical description page			50
Product code suffix			-ELS
Available for		series LPA...-FI as standard	all**

** Wheel load capacity of electrically conductive version reduced by 35%

LMDA-TPA series

Twin wheel light-duty castors with bolt hole, wheels with thermoplastic rubber tread



80–100 kg

Bracket: LMDA series

- pressed steel, zinc-plated, blue-passivated, Cr6-free
- double ball bearing in the swivel head
- pressed swivel head

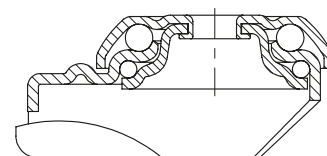
Wheel: TPA series

- tread: high-quality thermoplastic rubber-elastomer (TPE), hardness 85 Shore A, colour grey, non-marking, oil containing
- wheel centre: high-quality polypropylene, impact resistant, colour silver grey ("ELS" version colour black)

Additional details:

- bracket series: page 86
- brakes: page 112–113
- wheel series: page 122
- bearing types: page 84–85

1



Swivel castors	Swivel castors with "stop-fix" brake	Wheel Ø [mm]	Wheel width [mm]	Load capacity [kg]	Bearing type	Total height [mm]	Plate Ø [mm]	Bolt hole Ø [mm]	Offset swivel castor [mm]
LMDA-TPA 50G	LMDA-TPA 50G-FI	50	2 x 19	80	plain bore	71	41	10.2	31
LMDA-TPA 50KF	LMDA-TPA 50KF-FI	50	2 x 19	80	ball bearing (C)	71	41	10.2	31
LMDA-TPA 75G	LMDA-TPA 75G-FI	75	2 x 25	100	plain bore	98	55	10.2	34
LMDA-TPA 75KF	LMDA-TPA 75KF-FI	75	2 x 25	100	ball bearing (C)	98	55	10.2	34

Versions / options



	plain bore version	electrically conductive version, non-marking grey
Technical description page		50
Product code suffix		-ELS
Available for		all*

* Wheel load capacity of electrically conductive version reduced by 35%

LDA-TPA series

Twin wheel light-duty castors with top plate, wheels with thermoplastic rubber tread

80–100 kg

Bracket: LDA series

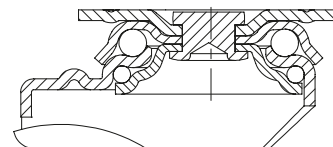
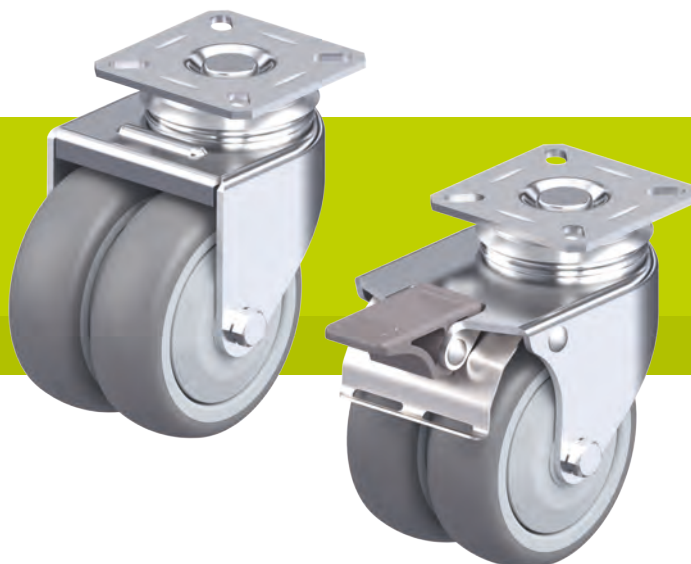
- pressed steel, zinc-plated, blue-passivated, Cr6-free
- double ball bearing in the swivel head
- pressed swivel head

Wheel: TPA series

- tread: high-quality thermoplastic rubber-elastomer (TPE), hardness 85 Shore A, colour grey, non-marking, oil containing
- wheel centre: high-quality polypropylene, impact resistant, colour silver grey ("ELS" version colour black)

Additional details:

- bracket series: page 86
- brakes: page 112–113
- wheel series: page 122
- bearing types: page 84–85



Swivel castors	Swivel castors with "stop-fix" brake	Wheel Ø [mm]	Wheel width [mm]	Load capacity [kg]	Bearing type	Total height [mm]	Plate size [mm]	Bolt hole spacing [mm]	Bolt hole Ø [mm]	Offset swivel castor [mm]
LDA-TPA 50G	LDA-TPA 50G-FI	50	2 x 19	80	plain bore	71	60 x 60	38 x 38 / 48 x 48	6.2	31
LDA-TPA 50KF	LDA-TPA 50KF-FI	50	2 x 19	80	ball bearing (C)	71	60 x 60	38 x 38 / 48 x 48	6.2	31
LDA-TPA 75G	LDA-TPA 75G-FI	75	2 x 25	100	plain bore	101	60 x 60	40 x 40 / 46 x 46	6.2	34
LDA-TPA 75KF	LDA-TPA 75KF-FI	75	2 x 25	100	ball bearing (C)	101	60 x 60	40 x 40 / 46 x 46	6.2	34

Versions / options



	plain bore version	electrically conductive version, non-marking grey
Technical description page		50
Product code suffix		-ELS
Available for		all*

* Wheel load capacity of electrically conductive version reduced by 35%

VPA series

Wheels with solid rubber tyre,
with synthetic rim

40–130 kg

Tread and tyre hardness

80 Shore A

Smooth operation / floor preservation

very good

Rolling resistance

good

Wear resistance

sufficient

Tyre:

- high-quality solid rubber, hardness 80 Shore A
- very good operational comfort
- very good floor preservation, low-noise operation
- colour grey, non-marking, non-staining (electrically conductive version “-EL” colour black, marking)

Rim:

- high-quality nylon 6 or polypropylene in the version “-EL”, impact resistant
- colour black

Other features:

- high chemical resistance to many aggressive substances, except oils
- operating temperature: -20 °C to +60 °C, reduced load capacity over +30 °C

Additional details:

- wheel series: page 60
- tread: page 52
- bearing types: page 84–85
- chemical resistance: page 51

Wheels	Wheel Ø (D) [mm]	Tyre width (T2) [mm]	Load capacity [kg]	Bearing type	Axle bore Ø (d) [mm]	Hub length (T1) [mm]
VPA 50/6G	50	18	40	plain bore	6	22
VPA 50/8G	50	18	40	plain bore	8	22
VPA 50/6K	50	18	40	ball bearing	6	22.5
VPA 75/8G	75	25	60	plain bore	8	29.5
VPA 75/6K	75	25	60	ball bearing	6	30
VPA 80/12G	80	25	80	plain bore	12	35
VPA 80/8K	80	25	80	ball bearing	8	35
VPA 100/8G	100	25	90	plain bore	8	29.5
VPA 100/12G	100	25	90	plain bore	12	29.5
VPA 100/6K	100	25	90	ball bearing	6	30
VPA 101/12G	100	32	110	plain bore	12	35
VPA 101/8K	100	32	110	ball bearing	8	35
VPA 125/12G	125	25	100	plain bore	12	35
VPA 125/8K	125	25	100	ball bearing	8	35
VPA 126/12G	125	32	125	plain bore	12	35
VPA 126/8K	125	32	125	ball bearing	8	35
VPA 150/12G	150	30	130	plain bore	12	35
VPA 150/8K	150	30	130	ball bearing	8	35

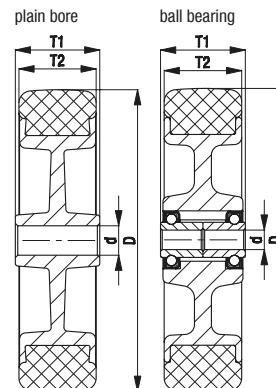


1

Versions / options



plain bore version	electrically conductive version, black tyre
Technical description page	50
Product code suffix	-EL
Available for	all ball bearing versions*



* Wheel load capacity of electrically conductive version reduced by 25%

LRA, BRA, LKRA, BKRA-VPA series (wheel Ø 50–100 mm)

Light-duty castors with bolt hole, wheel with solid rubber tyres

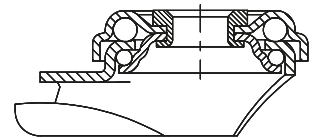


40–110 kg

- Bracket:** LRA/BRA, LKRA/BKRA series
- pressed steel, zinc-plated, blue-passivated, Cr6-free
- Swivel bracket:**
- double ball bearing in the swivel head
 - strong central kingpin
 - minimum swivel head play and smooth rolling characteristic and increased service life due to the special dynamic Blickle riveting process
 - synthetic “stop-fix” brake lever for series LRA, steel brake lever for series LKRA

- Wheel:** VPA series
- tyre: high-quality solid rubber, hardness 80 Shore A, colour grey, non-marking, non-staining
 - rim: high-quality nylon 6 or polypropylene in the electrically conductive version “-EL”, impact resistant, colour black

- Additional details:**
- bracket series: page 86
 - brakes: page 112–113
 - wheel series: page 127
 - bearing types: page 84–85



Swivel castors	Fixed castors	Swivel castors with “stop-fix” brake	Wheel Ø [mm]	Tyre width [mm]	Load capacity [kg]	Bearing type	Total height [mm]	Plate Ø [mm]	Bolt hole Ø [mm]	Offset swivel castor [mm]
LRA-VPA 50G	BRA-VPA 50G	LRA-VPA 50G-FI *	50	18	40	plain bore	69	43	11	23
LRA-VPA 50K	BRA-VPA 50K	LRA-VPA 50K-FI *	50	18	40	ball bearing	69	43	11	23
LRA-VPA 75G	BRA-VPA 75G	LRA-VPA 75G-FI *	75	25	60	plain bore	98	43	11	29
LRA-VPA 75K	BRA-VPA 75K	LRA-VPA 75K-FI *	75	25	60	ball bearing	98	43	11	29
LKRA-VPA 80G	BKRA-VPA 80G	LKRA-VPA 80G-FI	80	25	80	plain bore	108	57	13	40
LKRA-VPA 80G-11		LKRA-VPA 80G-11-FI	80	25	80	plain bore	108	57	11	40
LKRA-VPA 80K	BKRA-VPA 80K	LKRA-VPA 80K-FI	80	25	80	ball bearing	108	57	13	40
LKRA-VPA 80K-11		LKRA-VPA 80K-11-FI	80	25	80	ball bearing	108	57	11	40
LRA-VPA 100G		LRA-VPA 100G-FI *	100	25	70	plain bore	121	43	11	33
LRA-VPA 100K		LRA-VPA 100K-FI *	100	25	70	ball bearing	121	43	11	33
LKRA-VPA 101G	BKRA-VPA 101G	LKRA-VPA 101G-FI	100	32	110	plain bore	133	57	13	40
LKRA-VPA 101G-11		LKRA-VPA 101G-11-FI	100	32	110	plain bore	133	57	11	40
LKRA-VPA 101K	BKRA-VPA 101K	LKRA-VPA 101K-FI	100	32	110	ball bearing	133	57	13	40
LKRA-VPA 101K-11		LKRA-VPA 101K-11-FI	100	32	110	ball bearing	133	57	11	40

* Synthetic brake lever, see image below

For other wheel Ø, see next page, For stainless steel versions, see page 392

Versions / options**



	with synthetic brake lever	electrically conductive version, black tyre	with threaded pin M10 x 30 M12 x 30	with plug-in pin Ø 11 x 30.5	with synthetic expander fitting	with metal expander fitting
Technical description page		50	104	105	105	105
Product code suffix		-EL	-GS10 / -GS12	-ES	see page 148	see page 148
Available for	series LRA...-FI as standard	all ball bearing versions***	-GS10: series LRA -GS12: series LKRA	series LRA swivel castors****	swivel castors with bolt hole Ø 11 mm (except EL)	swivel castors with bolt hole Ø 11 mm

** Other versions / options: 1. buffers AG / ARG series see page 148 (page 116 for technical information) 2. pressed steel thread guard, zinc-plated (-FA), available for all with exception of ...50K (page 116 for technical information)

*** Wheel load capacity of electrically conductive version reduced by 25%

**** Synthetic castor socket for round tubes see page 148

LKRA-VPA, BKRA-VPA series (wheel Ø 125–150 mm)

Light-duty castors with bolt hole, wheel with solid rubber tyres



1

100–120 kg

Bracket: LKRA/BKRA series

- pressed steel, zinc-plated, blue-passivated, Cr6-free

Swivel bracket:

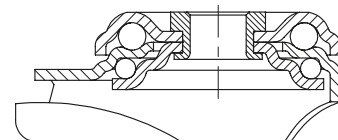
- double ball bearing in the swivel head
- strong central kingpin
- minimum swivel head play and smooth rolling characteristic and increased service life due to the special dynamic Blickle riveting process

Wheel: VPA series

- tyre: high-quality solid rubber, hardness 80 Shore A, colour grey, non-marking, non-staining
- rim: high-quality nylon 6 or polypropylene in the electrically conductive version “-EL”, impact resistant, colour black

Additional details:

- bracket series: page 86
- brakes: page 112–113
- wheel series: page 127
- bearing types: page 84–85



Swivel castors	Fixed castors	Swivel castors with “stop-fix” brake	Wheel Ø [mm]	Tyre width [mm]	Load capacity [kg]	Bearing type	Total height [mm]	Plate Ø [mm]	Bolt hole Ø [mm]	Offset swivel castor [mm]
LKRA-VPA 125G	BKRA-VPA 125G	LKRA-VPA 125G-FI	125	25	100	plain bore	158	57	13	40
LKRA-VPA 125G-11		LKRA-VPA 125G-11-FI	125	25	100	plain bore	158	57	11	40
LKRA-VPA 125K	BKRA-VPA 125K	LKRA-VPA 125K-FI	125	25	100	ball bearing	158	57	13	40
LKRA-VPA 125K-11		LKRA-VPA 125K-11-FI	125	25	100	ball bearing	158	57	11	40
LKRA-VPA 126G	BKRA-VPA 126G	LKRA-VPA 126G-FI	125	32	120	plain bore	158	57	13	40
LKRA-VPA 126G-11		LKRA-VPA 126G-11-FI	125	32	120	plain bore	158	57	11	40
LKRA-VPA 126K	BKRA-VPA 126K	LKRA-VPA 126K-FI	125	32	120	ball bearing	158	57	13	40
LKRA-VPA 126K-11		LKRA-VPA 126K-11-FI	125	32	120	ball bearing	158	57	11	40
LKRA-VPA 150G	BKRA-VPA 150G	LKRA-VPA 150G-FI	150	30	110	plain bore	182	57	13	40
LKRA-VPA 150G-11		LKRA-VPA 150G-11-FI	150	30	110	plain bore	182	57	11	40
LKRA-VPA 150K	BKRA-VPA 150K	LKRA-VPA 150K-FI	150	30	110	ball bearing	182	57	13	40
LKRA-VPA 150K-11		LKRA-VPA 150K-11-FI	150	30	110	ball bearing	182	57	11	40

For stainless steel versions, see page 392

Versions / options



	electrically conductive version, black tyre	with thread guard, pressed steel, zinc-plated	with threaded pin M12 x 30	with synthetic expander fitting	with metal expander fitting	buffers
Technical description page	50	116	104	105	105	116
Product code suffix	-EL	-FA	-GS12	see page 148	see page 148	AG / ARG series
Available for	all ball bearing versions*	all	swivel castors with bolt hole Ø 13 mm	swivel castors with bolt hole Ø 11 mm (except EL)	swivel castors with bolt hole Ø 11 mm	see page 148

* Wheel load capacity of electrically conductive version reduced by 25%

LPA-VPA, BPA-VPA, LKPA-VPA, BKPA-VPA series

Light-duty castors with top plate, wheel with solid rubber tyres



40–120 kg

Bracket: LPA/BPA, LKPA/BKPA series

- pressed steel, zinc-plated, blue-passivated, Cr6-free

Swivel bracket:

- double ball bearing in the swivel head
- strong central kingpin
- minimum swivel head play and smooth rolling characteristic and increased service life due to the special dynamic Blickle riveting process
- synthetic “stop-fix” brake lever for series LPA, steel brake lever for series LKPA

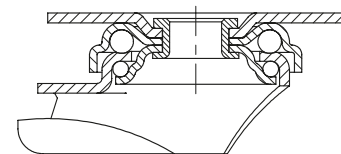
Wheel: VPA series

- tyre: high-quality solid rubber, hardness 80 Shore A, colour grey, non-marking, non-staining
- rim: high-quality nylon 6 or polypropylene in the electrically conductive version “-EL”, impact resistant, colour black

Additional details:

- bracket series: page 86
- brakes: page 112–113
- wheel series: page 127
- bearing types: page 84–85

1



Swivel castors	Fixed castors	Swivel castors with “stop-fix” brake	Wheel Ø [mm]	Tyre width [mm]	Load capacity [kg]	Bearing type	Total height [mm]	Plate size [mm]	Bolt hole spacing [mm]	Bolt hole Ø [mm]	Offset swivel castor [mm]
LPA-VPA 50G	BPA-VPA 50G	LPA-VPA 50G-FI *	50	18	40	plain bore	71	60 x 60	38 x 38 / 48 x 48	6.2	23
LPA-VPA 50K	BPA-VPA 50K	LPA-VPA 50K-FI *	50	18	40	ball bearing	71	60 x 60	38 x 38 / 48 x 48	6.2	23
LPA-VPA 75G	BPA-VPA 75G	LPA-VPA 75G-FI *	75	25	60	plain bore	100	60 x 60	38 x 38 / 48 x 48	6.2	29
LPA-VPA 75K	BPA-VPA 75K	LPA-VPA 75K-FI *	75	25	60	ball bearing	100	60 x 60	38 x 38 / 48 x 48	6.2	29
LKPA-VPA 80G	BKPA-VPA 80G	LKPA-VPA 80G-FI	80	25	80	plain bore	111	90 x 66	75 x 45 / 61 x 51	8.5	40
LKPA-VPA 80K	BKPA-VPA 80K	LKPA-VPA 80K-FI	80	25	80	ball bearing	111	90 x 66	75 x 45 / 61 x 51	8.5	40
LPA-VPA 100G		LPA-VPA 100G-FI *	100	25	70	plain bore	123	60 x 60	38 x 38 / 48 x 48	6.2	33
LPA-VPA 100K		LPA-VPA 100K-FI *	100	25	70	ball bearing	123	60 x 60	38 x 38 / 48 x 48	6.2	33
LKPA-VPA 101G	BKPA-VPA 101G	LKPA-VPA 101G-FI	100	32	110	plain bore	136	90 x 66	75 x 45 / 61 x 51	8.5	40
LKPA-VPA 101K	BKPA-VPA 101K	LKPA-VPA 101K-FI	100	32	110	ball bearing	136	90 x 66	75 x 45 / 61 x 51	8.5	40
LKPA-VPA 125G	BKPA-VPA 125G	LKPA-VPA 125G-FI	125	25	100	plain bore	161	90 x 66	75 x 45 / 61 x 51	8.5	40
LKPA-VPA 125K	BKPA-VPA 125K	LKPA-VPA 125K-FI	125	25	100	ball bearing	161	90 x 66	75 x 45 / 61 x 51	8.5	40
LKPA-VPA 126G	BKPA-VPA 126G	LKPA-VPA 126G-FI	125	32	120	plain bore	161	90 x 66	75 x 45 / 61 x 51	8.5	40
LKPA-VPA 126K	BKPA-VPA 126K	LKPA-VPA 126K-FI	125	32	120	ball bearing	161	90 x 66	75 x 45 / 61 x 51	8.5	40
LKPA-VPA 150G	BKPA-VPA 150G	LKPA-VPA 150G-FI	150	30	110	plain bore	185	90 x 66	75 x 45 / 61 x 51	8.5	40
LKPA-VPA 150K	BKPA-VPA 150K	LKPA-VPA 150K-FI	150	30	110	ball bearing	185	90 x 66	75 x 45 / 61 x 51	8.5	40

* Synthetic brake lever, see image below

For stainless steel versions, see page 393

Versions / options



	with synthetic brake lever	electrically conductive version, black tyre	with thread guard, pressed steel, zinc-plated
Technical description page		50	116
Product code suffix		-EL	-FA
Available for	series LPA...-FI as standard	all ball bearing versions**	all with exception of ...50K

** Wheel load capacity of electrically conductive version reduced by 25%

LMDA-VPA series

Twin wheel light-duty castors with bolt hole, wheels with solid rubber tyres

80–100 kg

Bracket: LMDA series

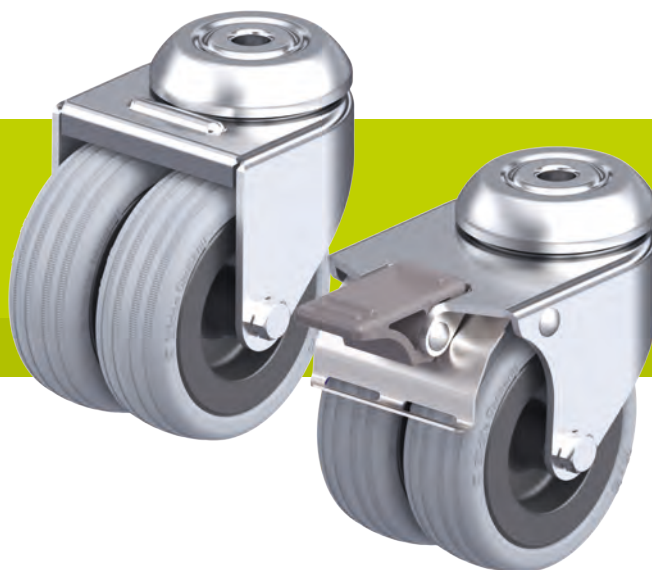
- pressed steel, zinc-plated, blue-passivated, Cr6-free
- double ball bearing in the swivel head
- pressed swivel head

Wheel: VPA series

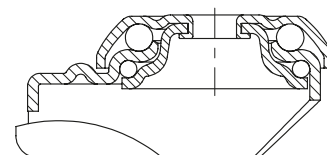
- tyre: high-quality solid rubber, hardness 80 Shore A, colour grey, non-marking, non-staining
- rim: high-quality nylon 6 or polypropylene in the electrically conductive version “-EL”, impact resistant, colour black

Additional details:

- bracket series: page 86
- brakes: page 112–113
- wheel series: page 127
- bearing types: page 84–85



1



Swivel castors	Swivel castors with “stop-fix” brake	Wheel Ø [mm]	Wheel width [mm]	Load capacity [kg]	Bearing type	Total height [mm]	Plate Ø [mm]	Bolt hole Ø [mm]	Offset swivel castor [mm]
LMDA-VPA 50G	LMDA-VPA 50G-FI	50	2 x 18	80	plain bore	71	41	10.2	31
LMDA-VPA 50K	LMDA-VPA 50K-FI	50	2 x 18	80	ball bearing	71	41	10.2	31
LMDA-VPA 75G	LMDA-VPA 75G-FI	75	2 x 25	100	plain bore	98	55	10.2	34
LMDA-VPA 75K	LMDA-VPA 75K-FI	75	2 x 25	100	ball bearing	98	55	10.2	34

Versions / options



electrically conductive version, black tyre	
Technical description page	50
Product code suffix	-EL
Available for	all ball bearing versions*

* Wheel load capacity of electrically conductive version reduced by 25%

LDA-VPA series

Twin wheel light-duty castors with top plate, wheels with solid rubber tyres

80–100 kg

Bracket: LDA series

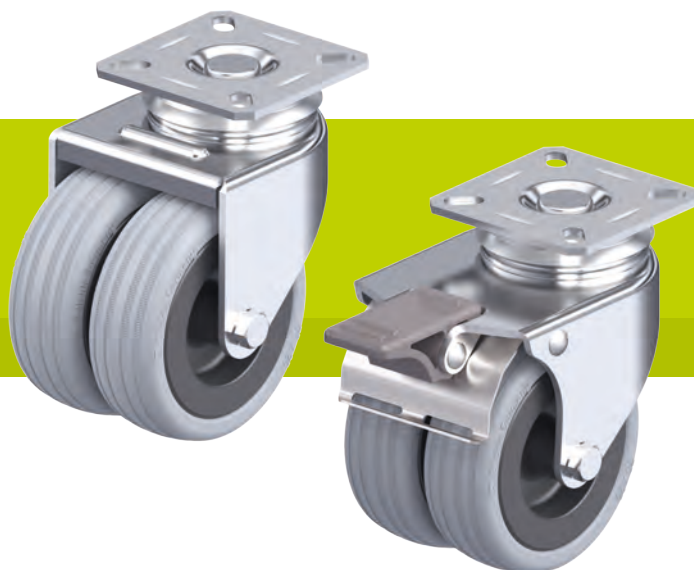
- pressed steel, zinc-plated, blue-passivated, Cr6-free
- double ball bearing in the swivel head
- pressed swivel head

Wheel: VPA series

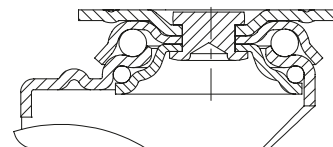
- tyre: high-quality solid rubber, hardness 80 Shore A, colour grey, non-marking, non-staining
- rim: high-quality nylon 6 or polypropylene in the electrically conductive version “-EL”, impact resistant, colour black

Additional details:

- bracket series: page 86
- brakes: page 112–113
- wheel series: page 127
- bearing types: page 84–85



1



Swivel castors	Swivel castors with “stop-fix” brake	Wheel Ø [mm]	Tyre width [mm]	Load capacity [kg]	Bearing type	Total height [mm]	Plate size [mm]	Bolt hole spacing [mm]	Bolt hole Ø [mm]	Offset swivel castor [mm]
LDA-VPA 50G	LDA-VPA 50G-FI	50	2 x 18	80	plain bore	71	60 x 60	38 x 38 / 48 x 48	6.2	31
LDA-VPA 50K	LDA-VPA 50K-FI	50	2 x 18	80	ball bearing	71	60 x 60	38 x 38 / 48 x 48	6.2	31
LDA-VPA 75G	LDA-VPA 75G-FI	75	2 x 25	100	plain bore	101	60 x 60	40 x 40 / 46 x 46	6.2	34
LDA-VPA 75K	LDA-VPA 75K-FI	75	2 x 25	100	ball bearing	101	60 x 60	40 x 40 / 46 x 46	6.2	34

Versions / options



electrically conductive version, black tyre	
Technical description page	50
Product code suffix	-EL
Available for	all ball bearing versions*

* Wheel load capacity of electrically conductive version reduced by 25%

POES series

Wheels with “Blickle SoftMotion” soft rubber tyres, with nylon wheel centre

120–150 kg

Tread and tyre hardness

55 Shore A

Smooth operation / floor preservation

excellent

Rolling resistance

very good

Wear resistance

good



1

Tyre:

- high-quality elastic solid rubber “Blickle SoftMotion”, hardness 55 Shore A
- maximum operational comfort
- excellent floor preservation, particularly quiet operation
- low rolling resistance
- colour grey, non-marking
- vulcanised onto the wheel centre

Wheel centre:

- high-quality nylon 6, impact resistant
- colour black

Other features:

- KF version: with synthetic thread guard, large
- high chemical resistance to many aggressive substances, except oils
- operating temperature: -20 °C to +80 °C, temporarily up to +100 °C, reduced load capacity over +35 °C

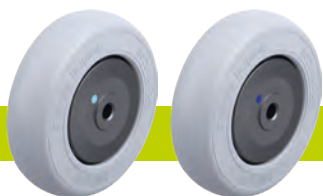
Additional details:

- wheel series: page 60
- tread: page 53
- bearing types: page 84–85
- chemical resistance: page 51

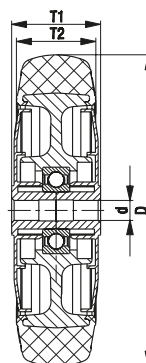
Wheels	Wheel Ø	Wheel width	Load capacity	Bearing type	Axle bore Ø	Hub length
	(D) [mm]	(T2) [mm]			(d) [mm]	(T1) [mm]
POES 102/8KF-SG	100	32	120	ball bearing (C)	8	36
POES 127/8KF-SG	125	32	150	ball bearing (C)	8	36

For other dimensions, see page 209

Versions / options



	large thread guard with additional ball bearing seals	with stainless steel ball bearing and thread guard
Technical description page	85	85
Product code suffix	-KFD	-XKF
Available for	upon request	all



LKRA-POES, BKRA-POES series

Light-duty castors with bolt hole, wheel with soft rubber tyres "Blickle SoftMotion"



120 kg

Bracket: LKRA/BKRA series

- pressed steel, zinc-plated, blue-passivated, Cr6-free

Swivel bracket:

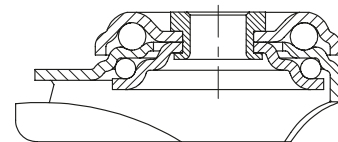
- double ball bearing in the swivel head
- strong central kingpin
- minimum swivel head play and smooth rolling characteristic and increased service life due to the special dynamic Blickle riveting process
- steel "stop-fix" brake lever

Wheel: POES series

- tyre: high-quality elastic solid rubber "Blickle SoftMotion", hardness 55 Shore A, colour grey, non-marking
- wheel centre: high-quality nylon 6, impact resistant, colour black

Additional details:

- bracket series: page 86
- brakes: page 112–113
- wheel series: page 133
- bearing types: page 84–85



Swivel castors	Fixed castors	Swivel castors with "stop-fix" brake	Wheel Ø [mm]	Wheel width [mm]	Load capacity [kg]	Bearing type	Total height [mm]	Plate Ø [mm]	Bolt hole Ø [mm]	Offset swivel castor [mm]
LKRA-POES 102KF-SG	BKRA-POES 102KF-SG	LKRA-POES 102KF-FI-SG	100	32	120	ball bearing (C)	133	57	13	40
LKRA-POES 102KF-11-SG		LKRA-POES 102KF-11-FI-SG	100	32	120	ball bearing (C)	133	57	11	40
LKRA-POES 127KF-SG	BKRA-POES 127KF-SG	LKRA-POES 127KF-FI-SG	125	32	120	ball bearing (C)	158	57	13	40
LKRA-POES 127KF-11-SG		LKRA-POES 127KF-11-FI-SG	125	32	120	ball bearing (C)	158	57	11	40

Versions / options



	with threaded pin M12 x 30	with synthetic expander fitting	with metal expander fitting
Technical description page	104	105	105
Product code suffix	-GS12	see page 148	see page 148
Available for	swivel castors with bolt hole Ø 13 mm	swivel castors with bolt hole Ø 11 mm	swivel castors with bolt hole Ø 11 mm

LKPA-POES, BKPA-POES series

Light-duty castors with top plate,
wheel with soft rubber tyres
"Blickle SoftMotion"

120 kg

Bracket: LKPA/BKPA series

- pressed steel, zinc-plated, blue-passivated, Cr6-free

Swivel bracket:

- double ball bearing in the swivel head
- minimum swivel head play and smooth rolling characteristic and increased service life due to the special dynamic Blickle riveting process
- steel "stop-fix" brake lever

Wheel: POES series

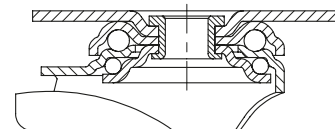
- tyre: high-quality elastic solid rubber "Blickle SoftMotion", hardness 55 Shore A, colour grey, non-marking
- wheel centre: high-quality nylon 6, impact resistant, colour black

Additional details:

- bracket series: page 86
- brakes: page 112–113
- wheel series: page 133
- bearing types: page 84–85



1



Swivel castors	Fixed castors	Swivel castors with "stop-fix" brake	Wheel Ø [mm]	Wheel width [mm]	Load capacity [kg]	Bearing type	Total height [mm]	Plate size [mm]	Bolt hole spacing [mm]	Bolt hole Ø [mm]	Offset swivel castor [mm]
LKPA-POES 102KF-SG	BKPA-POES 102KF-SG	LKPA-POES 102KF-FI-SG	100	32	120	ball bearing (C)	136	90 x 66	75 x 45 / 61 x 51	8.5	40
LKPA-POES 127KF-SG	BKPA-POES 127KF-SG	LKPA-POES 127KF-FI-SG	125	32	120	ball bearing (C)	161	90 x 66	75 x 45 / 61 x 51	8.5	40

PATH series

Wheels with thermoplastic polyurethane tread,
with nylon wheel centre



75–250 kg

Tread and tyre hardness

94 Shore A

Smooth operation / floor preservation

good

Rolling resistance

very good

Wear resistance

very good

1

Tread:

- high-quality thermoplastic polyurethane (TPU), hardness 94 Shore A
- low rolling and swivel resistance
- high abrasion resistance
- colour dark grey, non-marking, non-staining
- chemically-bonded inseparable connection with the wheel centre

Wheel centre:

- high-quality nylon 6, impact resistant
- colour silver grey

Other features:

- KF version: with synthetic thread guard, large
- very high chemical resistance to many aggressive substances
- operating temperature: -20 °C to +70 °C, temporarily up to +90 °C, reduced load capacity over +35 °C

Additional details:

- wheel series: page 61
- tread: page 55
- bearing types: page 84–85
- chemical resistance: page 51

Wheels	Wheel Ø	Wheel width	Load capacity	Bearing type	Axle bore Ø	Hub length
	(D) [mm]	(T2) [mm]	[kg]		(d) [mm]	(T1) [mm]
PATH 50/8G	50	19	75	plain bore	8	22
PATH 50/6KF	50	19	75	ball bearing (C)	6	23
PATH 75/8G	75	25	100	plain bore	8	29.5
PATH 75/6KF	75	25	100	ball bearing (C)	6	31
PATH 80/12G	80	32	150	plain bore	12	35
PATH 80/8KF	80	32	150	ball bearing (C)	8	36
PATH 101/12G	100	32	200	plain bore	12	35
PATH 101/8KF	100	32	200	ball bearing (C)	8	36
PATH 126/12G	125	32	250	plain bore	12	35
PATH 126/8KF	125	32	250	ball bearing (C)	8	36

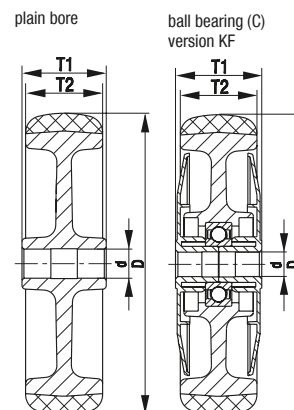
For other dimensions, see page 258

Versions / options



	plain bore version	electrically conductive version, non-marking grey	large thread guard with additional ball bearing seals
Technical description page		50	85
Product code suffix		-ELS	-KFD
Available for		all ball bearing versions*	ball bearing versions

* Wheel load capacity of electrically conductive version reduced by 35%



LRA-PATH, BRA-PATH, LKRA-PATH, BKRA-PATH series

Light-duty castors with bolt hole,
wheel with thermoplastic
polyurethane tread

75–120 kg

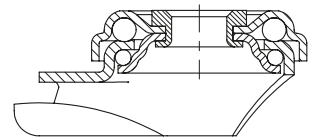


- Bracket:** LRA/BRA, LKRA/BKRA series
- pressed steel, zinc-plated, blue-passivated, Cr6-free
- Swivel bracket:**
- double ball bearing in the swivel head
 - strong central kingpin
 - minimum swivel head play and smooth rolling characteristic and increased service life due to the special dynamic Blickle riveting process
 - synthetic “stop-fix” brake lever for series LRA, steel brake lever for series LKRA

- Wheel:** PATH series
- tread: high-quality thermoplastic polyurethane (TPU), hardness 94 Shore A, colour dark grey, non-marking, non-staining
 - wheel centre: high-quality nylon 6, impact resistant, colour silver grey

- Additional details:**
- bracket series: page 86
 - brakes: page 112–113
 - wheel series: page 136
 - bearing types: page 84–85

1



Swivel castors	Fixed castors	Swivel castors with “stop-fix” brake	Wheel Ø [mm]	Wheel width [mm]	Load capacity [kg]	Bearing type	Total height [mm]	Plate Ø [mm]	Bolt hole Ø [mm]	Offset swivel castor [mm]
LRA-PATH 50G	BRA-PATH 50G	LRA-PATH 50G-FI *	50	19	75	plain bore	69	43	11	23
LRA-PATH 50KF	BRA-PATH 50KF	LRA-PATH 50KF-FI *	50	19	75	ball bearing (C)	69	43	11	23
LRA-PATH 75G	BRA-PATH 75G	LRA-PATH 75G-FI *	75	25	75	plain bore	98	43	11	29
LRA-PATH 75KF	BRA-PATH 75KF	LRA-PATH 75KF-FI *	75	25	75	ball bearing (C)	98	43	11	29
LKRA-PATH 80G	BKRA-PATH 80G	LKRA-PATH 80G-FI	80	32	120	plain bore	108	57	13	40
LKRA-PATH 80G-11		LKRA-PATH 80G-11-FI	80	32	120	plain bore	108	57	11	40
LKRA-PATH 80KF	BKRA-PATH 80KF	LKRA-PATH 80KF-FI	80	32	120	ball bearing (C)	108	57	13	40
LKRA-PATH 80KF-11		LKRA-PATH 80KF-11-FI	80	32	120	ball bearing (C)	108	57	11	40
LKRA-PATH 101G	BKRA-PATH 101G	LKRA-PATH 101G-FI	100	32	120	plain bore	133	57	13	40
LKRA-PATH 101G-11		LKRA-PATH 101G-11-FI	100	32	120	plain bore	133	57	11	40
LKRA-PATH 101KF	BKRA-PATH 101KF	LKRA-PATH 101KF-FI	100	32	120	ball bearing (C)	133	57	13	40
LKRA-PATH 101KF-11		LKRA-PATH 101KF-11-FI	100	32	120	ball bearing (C)	133	57	11	40
LKRA-PATH 126G	BKRA-PATH 126G	LKRA-PATH 126G-FI	125	32	120	plain bore	158	57	13	40
LKRA-PATH 126G-11		LKRA-PATH 126G-11-FI	125	32	120	plain bore	158	57	11	40
LKRA-PATH 126KF	BKRA-PATH 126KF	LKRA-PATH 126KF-FI	125	32	120	ball bearing (C)	158	57	13	40
LKRA-PATH 126KF-11		LKRA-PATH 126KF-11-FI	125	32	120	ball bearing (C)	158	57	11	40

* Synthetic brake lever, see image below

For stainless steel versions, see page 394

Versions / options**



	plain bore version	with synthetic brake lever	electrically conductive version, non-marking grey	with threaded pin M10 x 30 M12 x 30	with plug-in pin Ø 11 x 30.5	with synthetic expander fitting	with metal expander fitting
Technical description page			50	104	105	105	105
Product code suffix			-ELS	-GS10 / -GS12	-ES	see page 148	see page 148
Available for		series LRA...-FI as standard	all ball bearing versions***	-GS10: series LRA -GS12: series LKRA	series LRA swivel castors****	swivel castors with bolt hole Ø 11 mm (except ELS)	swivel castors with bolt hole Ø 11 mm

** Other versions / options: 1. bracket in special colours (electrostatic powder coating), available upon request 2. buffers AG / ARG series see page 148 (page 116 for technical information)

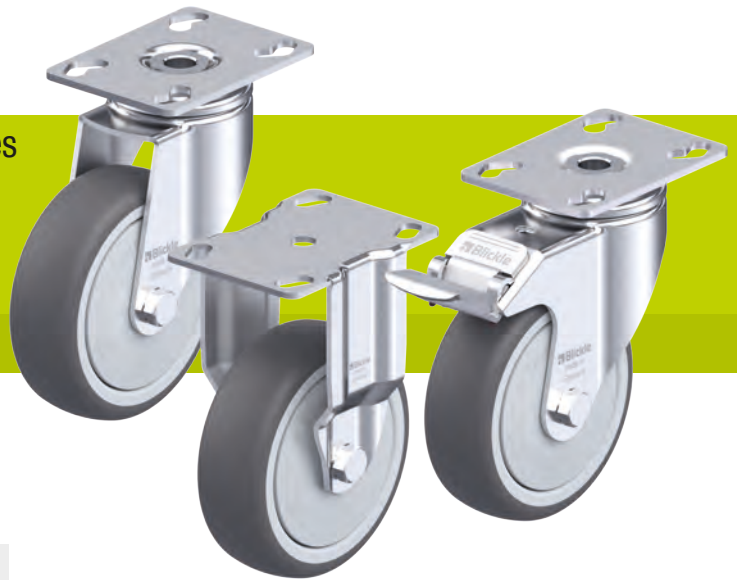
*** Wheel load capacity of electrically conductive version reduced by 35%

**** Synthetic castor socket for round tubes see page 148

LPA-PATH, BPA-PATH, LKPA-PATH, BKPA-PATH series

Light-duty castors with top plate,
wheel with thermoplastic
polyurethane tread

75–120 kg



Bracket: LPA/BPA, LKPA/BKPA series

- pressed steel, zinc-plated, blue-passivated, Cr6-free

Swivel bracket:

- double ball bearing in the swivel head
- strong central kingpin
- minimum swivel head play and smooth rolling characteristic and increased service life due to the special dynamic Blickle riveting process
- synthetic “stop-fix” brake lever for series LPA, steel brake lever for series LKPA

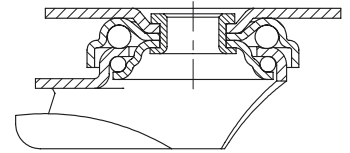
Wheel: PATH series

- tread: high-quality thermoplastic polyurethane (TPU), hardness 94 Shore A, colour dark grey, non-marking, non-staining
- wheel centre: high-quality nylon 6, impact resistant, colour silver grey

Additional details:

- bracket series: page 86
- brakes: page 112–113
- wheel series: page 136
- bearing types: page 84–85

1



Swivel castors	Fixed castors	Swivel castors with “stop-fix” brake	Wheel Ø [mm]	Wheel width [mm]	Load capacity [kg]	Bearing type	Total height [mm]	Plate size [mm]	Bolt hole spacing [mm]	Bolt hole Ø [mm]	Offset swivel castor [mm]
LPA-PATH 50G	BPA-PATH 50G	LPA-PATH 50G-FI *	50	19	75	plain bore	71	60 x 60	38 x 38 / 48 x 48	6.2	23
LPA-PATH 50KF	BPA-PATH 50KF	LPA-PATH 50KF-FI *	50	19	75	ball bearing (C)	71	60 x 60	38 x 38 / 48 x 48	6.2	23
LPA-PATH 75G	BPA-PATH 75G	LPA-PATH 75G-FI *	75	25	75	plain bore	100	60 x 60	38 x 38 / 48 x 48	6.2	29
LPA-PATH 75KF	BPA-PATH 75KF	LPA-PATH 75KF-FI *	75	25	75	ball bearing (C)	100	60 x 60	38 x 38 / 48 x 48	6.2	29
LKPA-PATH 80G	BKPA-PATH 80G	LKPA-PATH 80G-FI	80	32	120	plain bore	111	90 x 66	75 x 45 / 61 x 51	8.5	40
LKPA-PATH 80KF	BKPA-PATH 80KF	LKPA-PATH 80KF-FI	80	32	120	ball bearing (C)	111	90 x 66	75 x 45 / 61 x 51	8.5	40
LKPA-PATH 101G	BKPA-PATH 101G	LKPA-PATH 101G-FI	100	32	120	plain bore	136	90 x 66	75 x 45 / 61 x 51	8.5	40
LKPA-PATH 101KF	BKPA-PATH 101KF	LKPA-PATH 101KF-FI	100	32	120	ball bearing (C)	136	90 x 66	75 x 45 / 61 x 51	8.5	40
LKPA-PATH 126G	BKPA-PATH 126G	LKPA-PATH 126G-FI	125	32	120	plain bore	161	90 x 66	75 x 45 / 61 x 51	8.5	40
LKPA-PATH 126KF	BKPA-PATH 126KF	LKPA-PATH 126KF-FI	125	32	120	ball bearing (C)	161	90 x 66	75 x 45 / 61 x 51	8.5	40

* Synthetic brake lever, see image below

For stainless steel versions, see page 395

Versions / options



	plain bore version	with synthetic brake lever	electrically conductive version, non-marking grey
Technical description page			50
Product code suffix			-ELS
Available for		series LPA...-FI as standard	all ball bearing versions**

** Wheel load capacity of electrically conductive version reduced by 35%

LMDA-PATH series

Twin wheel light-duty castors with bolt hole, wheel with thermoplastic polyurethane tread

80–100 kg

Bracket: LMDA series

- pressed steel, zinc-plated, blue-passivated, Cr6-free
- double ball bearing in the swivel head
- pressed swivel head

Wheel: PATH series

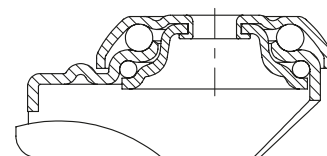
- tread: high-quality thermoplastic polyurethane (TPU), hardness 94 Shore A, colour dark grey, non-marking, non-staining
- wheel centre: high-quality nylon 6, impact resistant, colour silver grey

Additional details:

- bracket series: page 86
- brakes: page 112–113
- wheel series: page 136
- bearing types: page 84–85



1



Swivel castors	Swivel castors with "stop-fix" brake	Wheel Ø [mm]	Wheel width [mm]	Load capacity [kg]	Bearing type	Total height [mm]	Plate Ø [mm]	Bolt hole Ø [mm]	Offset swivel castor [mm]
LMDA-PATH 50G	LMDA-PATH 50G-FI	50	2 x 19	80	plain bore	71	41	10.2	31
LMDA-PATH 50KF	LMDA-PATH 50KF-FI	50	2 x 19	80	ball bearing (C)	71	41	10.2	31
LMDA-PATH 75G	LMDA-PATH 75G-FI	75	2 x 25	100	plain bore	98	55	10.2	34
LMDA-PATH 75KF	LMDA-PATH 75KF-FI	75	2 x 25	100	ball bearing (C)	98	55	10.2	34

Versions / options



	plain bore version	electrically conductive version, non-marking grey
Technical description page		50
Product code suffix		-ELS
Available for		all ball bearing versions*

* Wheel load capacity of electrically conductive version reduced by 35%

LDA-PATH series

Twin wheel light-duty castors with top plate, wheels with thermoplastic polyurethane tread



80–100 kg

Bracket: LDA series

- pressed steel, zinc-plated, blue-passivated, Cr6-free
- double ball bearing in the swivel head
- pressed swivel head

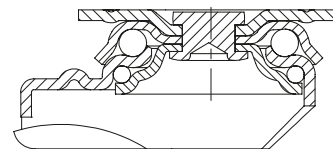
Wheel: PATH series

- tread: high-quality thermoplastic polyurethane (TPU), hardness 94 Shore A, colour dark grey, non-marking, non-staining
- wheel centre: high-quality nylon 6, impact resistant, colour silver grey

Additional details:

- bracket series: page 86
- brakes: page 112–113
- wheel series: page 136
- bearing types: page 84–85

1



Swivel castors	Swivel castors with "stop-fix" brake	Wheel Ø [mm]	Wheel width [mm]	Load capacity [kg]	Bearing type	Total height [mm]	Plate size [mm]	Bolt hole spacing [mm]	Bolt hole Ø [mm]	Offset swivel castor [mm]
LDA-PATH 50G	LDA-PATH 50G-FI	50	2 x 19	80	plain bore	71	60 x 60	38 x 38 / 48 x 48	6.2	31
LDA-PATH 50KF	LDA-PATH 50KF-FI	50	2 x 19	80	ball bearing (C)	71	60 x 60	38 x 38 / 48 x 48	6.2	31
LDA-PATH 75G	LDA-PATH 75G-FI	75	2 x 25	100	plain bore	101	60 x 60	40 x 40 / 46 x 46	6.2	34
LDA-PATH 75KF	LDA-PATH 75KF-FI	75	2 x 25	100	ball bearing (C)	101	60 x 60	40 x 40 / 46 x 46	6.2	34

Versions / options



	plain bore version	electrically conductive version, non-marking grey
Technical description page		50
Product code suffix		-ELS
Available for		all ball bearing versions*

* Wheel load capacity of electrically conductive version reduced by 35%

LRA-VSTH, LKRA-VSTH series

Light-duty castors with bolt hole, wheel with Blickle Extrathane® polyurethane tread

100–150 kg



Bracket: LRA/LKRA series

- pressed steel, zinc-plated, blue-passivated, Cr6-free
- double ball bearing in the swivel head
- strong central kingpin
- minimum swivel head play and smooth rolling characteristic and increased service life due to the special dynamic Blickle riveting process

Wheel: VSTH series

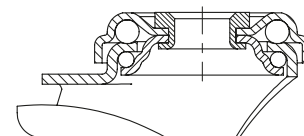
- tread: high-quality polyurethane elastomer Blickle Extrathane®, hardness 92 Shore A, colour light brown, non-marking, non-staining
- wheel centre: steel

Additional details:

- bracket series: page 86
- brakes: page 112–113
- wheel series: page 66
- bearing types: page 84–85



1



Swivel castors	Swivel castors with "Radstop" brake	Wheel Ø [mm]	Wheel width [mm]	Load capacity [kg]	Bearing type	Total height [mm]	Plate Ø [mm]	Bolt hole Ø [mm]	Offset swivel castor [mm]
LRA-VSTH 35K	LRA-VSTH 35K-RA	35	27	100	ball bearing	50	43	11	15
LKRA-VSTH 50K	LKRA-VSTH 50K-RA	50	33	150	ball bearing	70	57	13	29

For additional castors with a high load capacity and low total height, see the "Compact castors" section

Versions / options



	with threaded pin M10 x 30	with threaded pin M12 x 30	buffers
Technical description page	104	104	116
Product code suffix	-GS10	-GS12	AG / ARG series
Available for	LRA-VSTH 35K*	LKRA-VSTH 50K	see page 148

* Load capacity reduced by 20%

LPA-VSTH, LKPA-VSTH series

Light-duty castors with top plate,
wheel with Blickle Extrathane®
polyurethane tread



100–150 kg

Bracket: LPA/LKPA series

- pressed steel, zinc-plated, blue-passivated, Cr6-free
- double ball bearing in the swivel head
- strong central kingpin
- minimum swivel head play and smooth rolling characteristic and increased service life due to the special dynamic Blickle riveting process

Wheel: VSTH series

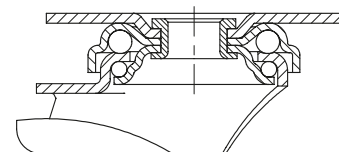
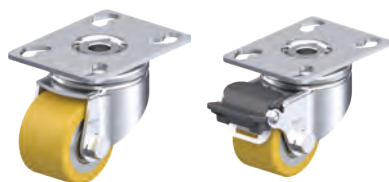
- tread: high-quality polyurethane elastomer Blickle Extrathane®, hardness 92 Shore A, colour light brown, non-marking, non-staining
- wheel centre: steel

Additional details:

- bracket series: page 86
- brakes: page 112–113
- wheel series: page 66
- bearing types: page 84–85



1



Swivel castors	Swivel castors with "Radstop" brake	Wheel Ø [mm]	Wheel width [mm]	Load capacity [kg]	Bearing type	Total height [mm]	Plate size [mm]	Bolt hole spacing [mm]	Bolt hole Ø [mm]	Offset swivel castor [mm]
LPA-VSTH 35K	LPA-VSTH 35K-RA	35	27	100	ball bearing	52	60 x 60	38 x 38 / 48 x 48	6.2	15
LKPA-VSTH 50K	LKPA-VSTH 50K-RA	50	33	150	ball bearing	73	90 x 66	75 x 45 / 61 x 51	8.5	29

For additional castors with a high load capacity and low total height, see the "Compact castors" section

POA series

Nylon wheels

75–280 kg

Tread and tyre hardness

70 Shore D

Smooth operation / floor preservation

satisfactory

Rolling resistance

excellent

Wear resistance

good

Wheel:

- high-quality nylon 6, impact resistant, hardness 70 Shore D
- excellent rolling and swivel resistance
- easy operation on smooth surfaces
- high abrasion resistance
- colour black

Other features:

- high chemical resistance to many aggressive substances
- operating temperature: -20 °C to +80 °C, reduced load capacity over +35 °C

Additional details:

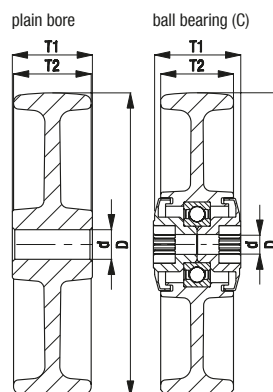
- wheel series: page 61
- tread: page 57
- bearing types: page 84–85
- chemical resistance: page 51



1

Wheels	Wheel Ø	Wheel width	Load capacity	Bearing type	Axle bore Ø	Hub length
	(D) [mm]	(T2) [mm]	[kg]		(d) [mm]	(T1) [mm]
POA 35/8G	35	25	75	plain bore	8	29.5
POA 50/8G	50	18	75	plain bore	8	22
POA 52/12G	50	29	120	plain bore	12	31
POA 58/10G	58	29	100	plain bore	10	31
POA 65/10G	65	30	100	plain bore	10	33
POA 65/12G	65	30	100	plain bore	12	33
POA 75/8G	75	23	100	plain bore	8	29.5
POA 80/12G	80	32	220	plain bore	12	35
POA 102/8G	100	22	100	plain bore	8	29.5
POA 100/8K	100	30	240	ball bearing (C)	8	36
POA 100/12G	100	32	240	plain bore	12	35
POA 125/8K	125	30	260	ball bearing (C)	8	36
POA 125/12G	125	32	260	plain bore	12	35
POA 150/12G	150	32	280	plain bore	12	35

For additional nylon wheels, see page 343, 344



LRA-POA, BRA-POA, LKRA-POA, BKRA-POA series

Light-duty castors with bolt hole, with nylon wheel

70–120 kg

Bracket: LRA/BRA, LKRA/BKRA series
 • pressed steel, zinc-plated, blue-passivated, Cr6-free

Swivel bracket:

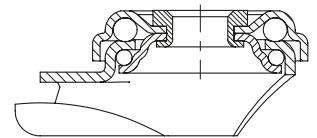
- double ball bearing in the swivel head
- strong central kingpin
- minimum swivel head play and smooth rolling characteristic and increased service life due to the special dynamic Blickle riveting process
- synthetic “stop-fix” brake lever for series LRA, steel brake lever for series LKRA

Wheel: POA series

- high-quality nylon 6, impact resistant, hardness 70 Shore D, colour black

Additional details:

- bracket series: page 86
- brakes: page 112–113
- wheel series: page 143
- bearing types: page 84–85



Swivel castors	Fixed castors	Swivel castors with “stop-fix” brake	Wheel Ø [mm]	Wheel width [mm]	Load capacity [kg]	Bearing type	Total height [mm]	Plate Ø [mm]	Bolt hole Ø [mm]	Offset swivel castor [mm]
LRA-POA 35G		LRA-POA 35G-RA *	35	25	75	plain bore	50	43	11	15
LRA-POA 50G	BRA-POA 50G	LRA-POA 50G-FI **	50	18	75	plain bore	69	43	11	23
LKRA-POA 52G		LKRA-POA 52G-RA *	50	29	120	plain bore	70	57	13	29
LRA-POA 75G	BRA-POA 75G	LRA-POA 75G-FI **	75	23	75	plain bore	98	43	11	29
LKRA-POA 80G	BKRA-POA 80G	LKRA-POA 80G-FI	80	32	120	plain bore	108	57	13	40
LKRA-POA 80G-11		LKRA-POA 80G-11-FI	80	32	120	plain bore	108	57	11	40
LRA-POA 102G		LRA-POA 102G-FI **	100	22	70	plain bore	121	43	11	33
LKRA-POA 100K	BKRA-POA 100K	LKRA-POA 100K-FI	100	30	120	ball bearing (C)	133	57	13	40
LKRA-POA 100K-11		LKRA-POA 100K-11-FI	100	30	120	ball bearing (C)	133	57	11	40
LKRA-POA 100G	BKRA-POA 100G	LKRA-POA 100G-FI	100	32	120	plain bore	133	57	13	40
LKRA-POA 100G-11		LKRA-POA 100G-11-FI	100	32	120	plain bore	133	57	11	40
LKRA-POA 125K	BKRA-POA 125K	LKRA-POA 125K-FI	125	30	120	ball bearing (C)	158	57	13	40
LKRA-POA 125K-11		LKRA-POA 125K-11-FI	125	30	120	ball bearing (C)	158	57	11	40
LKRA-POA 125G	BKRA-POA 125G	LKRA-POA 125G-FI	125	32	120	plain bore	158	57	13	40
LKRA-POA 125G-11		LKRA-POA 125G-11-FI	125	32	120	plain bore	158	57	11	40
LKRA-POA 150G	BKRA-POA 150G	LKRA-POA 150G-FI	150	32	110	plain bore	182	57	13	40
LKRA-POA 150G-11		LKRA-POA 150G-11-FI	150	32	110	plain bore	182	57	11	40

* “Radstop” brake version

** Synthetic brake lever, see image below

For stainless steel versions, see page 396

Versions / options



	with synthetic brake lever	“Radstop” wheel brake	with threaded pin M10 x 30 M12 x 30	with plug-in pin Ø 11 x 30.5	with synthetic expander fitting	with metal expander fitting	buffers
Technical description page			104	105	105	105	116
Product code suffix			-GS10 / -GS12	-ES	see page 148	see page 148	AG / ARG series
Available for	series LRA...-FI as standard	series LRA Ø 35 mm series LKRA Ø 50 mm	-GS10: series LRA -GS12: series LKRA	series LRA swivel castors***	swivel castors bolt hole Ø 11 mm (with exception of Ø 35 mm)	swivel castors bolt hole Ø 11 mm (with exception of Ø 35 mm)	see page 148

*** Synthetic castor socket for round tubes see page 148

LPA-POA, BPA-POA, LKPA-POA, BKPA-POA series

Light-duty castors with top plate, with nylon wheel

70–120 kg

Bracket: LPA/BPA, LKPA/BKPA series

- pressed steel, zinc-plated, blue-passivated, Cr6-free

Swivel bracket:

- double ball bearing in the swivel head
- strong central kingpin
- minimum swivel head play and smooth rolling characteristic and increased service life due to the special dynamic Blickle riveting process
- synthetic “stop-fix” brake lever for series LPA, steel brake lever for series LKPA

Wheel: POA series

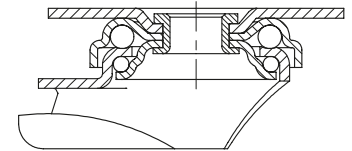
- high-quality nylon 6, impact resistant, hardness 70 Shore D, colour black

Additional details:

- bracket series: page 86
- brakes: page 112–113
- wheel series: page 143
- bearing types: page 84–85



1



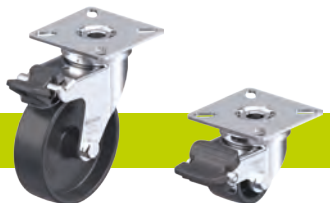
Swivel castors	Fixed castors	Swivel castors with “stop-fix” brake	Wheel Ø [mm]	Wheel width [mm]	Load capacity [kg]	Bearing type	Total height [mm]	Plate size [mm]	Bolt hole spacing [mm]	Bolt hole Ø [mm]	Offset swivel castor [mm]
LPA-POA 35G		LPA-POA 35G-RA *	35	25	75	plain bore	52	60 x 60	38 x 38 / 48 x 48	6.2	15
LPA-POA 50G	BPA-POA 50G	LPA-POA 50G-FI **	50	18	75	plain bore	71	60 x 60	38 x 38 / 48 x 48	6.2	23
LKPA-POA 52G		LKPA-POA 52G-RA *	50	29	120	plain bore	73	90 x 66	75 x 45 / 61 x 51	8.5	29
LPA-POA 75G	BPA-POA 75G	LPA-POA 75G-FI **	75	23	75	plain bore	100	60 x 60	38 x 38 / 48 x 48	6.2	29
LKPA-POA 80G	BKPA-POA 80G	LKPA-POA 80G-FI	80	32	120	plain bore	111	90 x 66	75 x 45 / 61 x 51	8.5	40
LPA-POA 102G		LPA-POA 102G-FI **	100	22	70	plain bore	123	60 x 60	38 x 38 / 48 x 48	6.2	33
LKPA-POA 100K	BKPA-POA 100K	LKPA-POA 100K-FI	100	30	120	ball bearing (C)	136	90 x 66	75 x 45 / 61 x 51	8.5	40
LKPA-POA 100G	BKPA-POA 100G	LKPA-POA 100G-FI	100	32	120	plain bore	136	90 x 66	75 x 45 / 61 x 51	8.5	40
LKPA-POA 125K	BKPA-POA 125K	LKPA-POA 125K-FI	125	30	120	ball bearing (C)	161	90 x 66	75 x 45 / 61 x 51	8.5	40
LKPA-POA 125G	BKPA-POA 125G	LKPA-POA 125G-FI	125	32	120	plain bore	161	90 x 66	75 x 45 / 61 x 51	8.5	40
LKPA-POA 150G	BKPA-POA 150G	LKPA-POA 150G-FI	150	32	110	plain bore	185	90 x 66	75 x 45 / 61 x 51	8.5	40

* “Radstop” brake version

** Synthetic brake lever, see image below

For stainless steel versions, see page 397

Versions / options



with synthetic brake lever	“Radstop” wheel brake
----------------------------	-----------------------

Technical description page

Product code suffix

Available for	series LPA...-FI as standard	series LPA Ø 35 mm series LKPA Ø 50 mm
---------------	------------------------------	--

LMDA-POA series

Twin wheel light-duty castors with bolt hole, with nylon wheels



80–100 kg

Bracket: LMDA series

- pressed steel, zinc-plated, blue-passivated, Cr6-free
- double ball bearing in the swivel head
- pressed swivel head

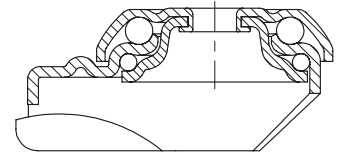
Wheel: POA series

- high-quality nylon 6, impact resistant, hardness 70 Shore D, colour black

Additional details:

- bracket series: page 86
- brakes: page 112–113
- wheel series: page 143
- bearing types: page 84–85

1



Swivel castors	Swivel castors with "stop-fix" brake	Wheel Ø [mm]	Wheel width [mm]	Load capacity [kg]	Bearing type	Total height [mm]	Plate Ø [mm]	Bolt hole Ø [mm]	Offset swivel castor [mm]
LMDA-POA 50G	LMDA-POA 50G-FI	50	2 x 18	80	plain bore	71	41	10.2	31
LMDA-POA 75G	LMDA-POA 75G-FI	75	2 x 23	100	plain bore	98	55	10.2	34

LDA-POA series

Twin wheel light-duty castors with top plate, with nylon wheels

80–100 kg

Bracket: LDA series

- pressed steel, zinc-plated, blue-passivated, Cr6-free
- double ball bearing in the swivel head
- pressed swivel head

Wheel: POA series

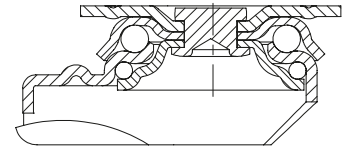
- high-quality nylon 6, impact resistant, hardness 70 Shore D, colour black

Additional details:

- bracket series: page 86
- brakes: page 112–113
- wheel series: page 143
- bearing types: page 84–85



1



Swivel castors	Swivel castors with "stop-fix" brake	Wheel Ø [mm]	Wheel width [mm]	Load capacity [kg]	Bearing type	Total height [mm]	Plate size [mm]	Bolt hole spacing [mm]	Bolt hole Ø [mm]	Offset swivel castor [mm]
LDA-POA 50G	LDA-POA 50G-FI	50	2 x 18	80	plain bore	71	60 x 60	38 x 38 / 48 x 48	6.2	31
LDA-POA 75G	LDA-POA 75G-FI	75	2 x 23	100	plain bore	101	60 x 60	40 x 40 / 46 x 46	6.2	34

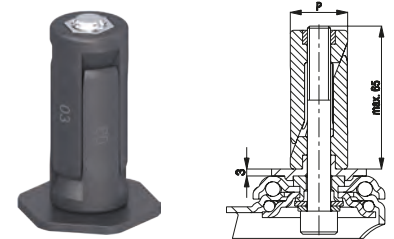
Versions / options for light-duty castors

1

Synthetic expander fitting for round tubes *

Product code suffix for LRA series	Product code suffix for LKRA series	Internal tube dimension (P) [mm]	Available for all swivel castors in the LRA/LKRA series with bolt hole \varnothing 11 mm. Swivel castor and expander secured to prevent loosening with positive locking. Maximum fitting length is 65 mm. Increases total height of swivel castors by 3 mm.
-ER02	-ER12	\varnothing 20–25	Detailed description: page 105
-ER03	-ER13	\varnothing 25–30	
-ER04	-ER14	\varnothing 30–35	
-ER05	-ER15	\varnothing 35–40	

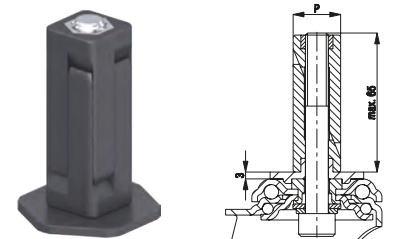
* Corrosion-resistant versions page 398



Synthetic expander fitting for square tubes *

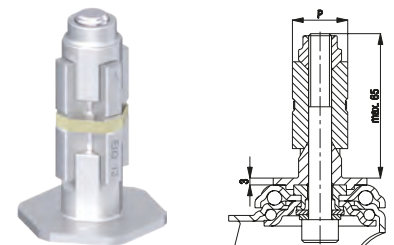
Product code suffix for LRA series	Product code suffix for LKRA series	Internal tube dimension (P) [mm]	Available for all swivel castors in the LRA/LKRA series with bolt hole \varnothing 11 mm. Swivel castor and expander secured to prevent loosening with positive locking. Maximum fitting length is 65 mm. Increases total height of swivel castors by 3 mm.
-EV02	-EV12	\square 18–21	Detailed description: page 105
-EV03	-EV13	\square 21–25	
-EV04	-EV14	\square 25–29	
-EV05	-EV15	\square 29–32	
-EV07	-EV17	\square 32–38.5	
	-EV18	\square 35.5–41	

* Corrosion-resistant versions page 398



Metal expander fitting for round and square tubes

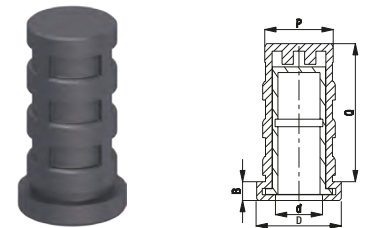
Product code suffix for LRA series	Product code suffix for LKRA series	Internal tube dimension round tube (P) [mm]	Internal tube dimension square tube (P) [mm]	Available for all swivel castors in the LRA/LKRA series with bolt hole \varnothing 11 mm. Swivel castor and expander secured against rotation by positive locking. Maximum fitting length is 65 mm. Increases total height of swivel castors by 3 mm.
-E01	-E11	\varnothing 17–19	\square 17–19	Detailed description: page 105
-E02	-E12	\varnothing 20–25	\square 18–21	
-E03	-E13	\varnothing 25–30	\square 21–25	
-E04	-E14	\varnothing 30–35	\square 25–29	
-E05	-E15	\varnothing 35–40	\square 29–32	
-E07	-E17	\varnothing 39–45	\square 32–38.5	



Synthetic castor socket for round tube

Product code	Internal tube dimension round tube (P) [mm]	Flange dimension \varnothing (D) x height (B) [mm]	Fitting length castor sockets (Q) [mm]	Available for all swivel castors with plug-in pin \varnothing (d) 11 x 30.5 mm in the LRA series. Detailed description: page 105
RHR 20-18/11A	\varnothing 18.0	\varnothing 20.0 x 5.0	42	
RHR 22-19/11A	\varnothing 19.0	\varnothing 22.0 x 5.0	42	

Other dimensions are available upon request



Buffers for round and square tubes

Product code	Wheel \varnothing (D) [mm]	Wheel width (T1) [mm]	Hole (d) [mm]	Buffers reduce the risk of damage to walls and vehicles in the event of a collision. Buffers for round and square tubes are fixed or connected to tubular frames in the external areas of vehicles. AG series: Made from soft synthetic polyethylene, hardness 48 Shore D, colour silver grey RAL 7001, non-marking. ARG series: Made from solid rubber, hardness 75 Shore A, colour grey, non-marking. Detailed description: page 116
Synthetic buffers (polyethylene)				
AG 100/R25	100	17.5	\varnothing 25	
AG 100/V25	100	17.5	\square 25 x 25	
AG 125/R25	125	17.5	\varnothing 25	
AG 125/V25	125	17.5	\square 25 x 25	
Solid rubber buffers				
ARG 75/R10	75	23	\varnothing 10	
ARG 100/R26	100	23	\varnothing 26	
ARG 100/R32	100	23	\varnothing 32	
ARG 125/R26	125	23	\varnothing 26	
ARG 125/R32	125	23	\varnothing 32	

Other dimensions and special colours available upon request

